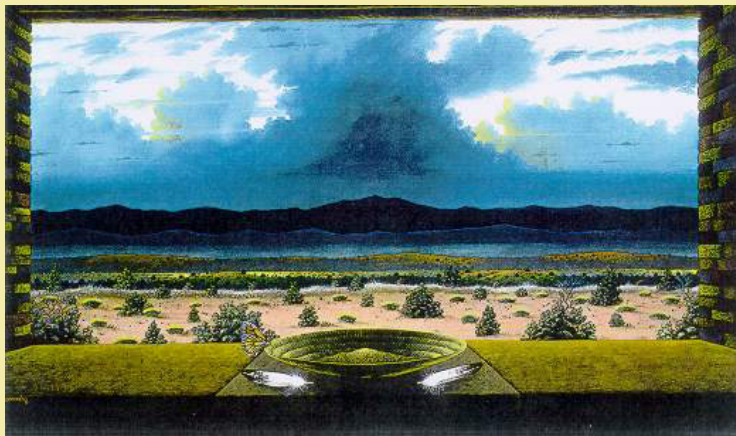


Clifford Brycelea: Santa Fe, New Mexico

Diné

Watercolors, Acrylic, and Print



The work of Navajo artist Clifford Brycelea reflects the legends and lifestyles of Native Americans. Using an array of water-soluble media, acrylic and pen & ink, he executes each of his painting with a specific purpose in mind. Within Brycelea's two distinct styles, mystical and realistic, a story is always hidden. Brycelea exerts his talents with

a realistic flair in his landscape paintings. Each scene is a still life of Native American culture, influenced by his youth on the Navajo reservation in Arizona. Omnipresent in his work is the theme of Mother Earth: the paradox of her power and fragility in today's world. Symbols communicating Brycelea's point may appear in the form of a tree that is healthy on the bottom but brittle and brown at the top. Each landscape provides a silent open refuge for the collector to escape from the hassles of society today. In Brycelea's mystical images his formal training in commercial art is apparent. Depicting traditional Native American legends, Brycelea leaves the interpretation of each story to the viewer. That allows him to express what he knows best, Native American culture, without showing too much and offending his people. Brycelea has a specific message in mind each time he begins to paint. Through his highly symbolic styles of realism and mysticism, he is able to communicate his message on canvas. He hopes for his work to speak to the collectors and allows much room for individual interpretation. Brycelea was named the 1987 Artist of the year by the Indian Arts and Crafts Association. He continues to win awards including gold medals for the American Indian Cowboy Artists Society and was awarded 2nd place in the 2004 SWAIA Indian Market.

